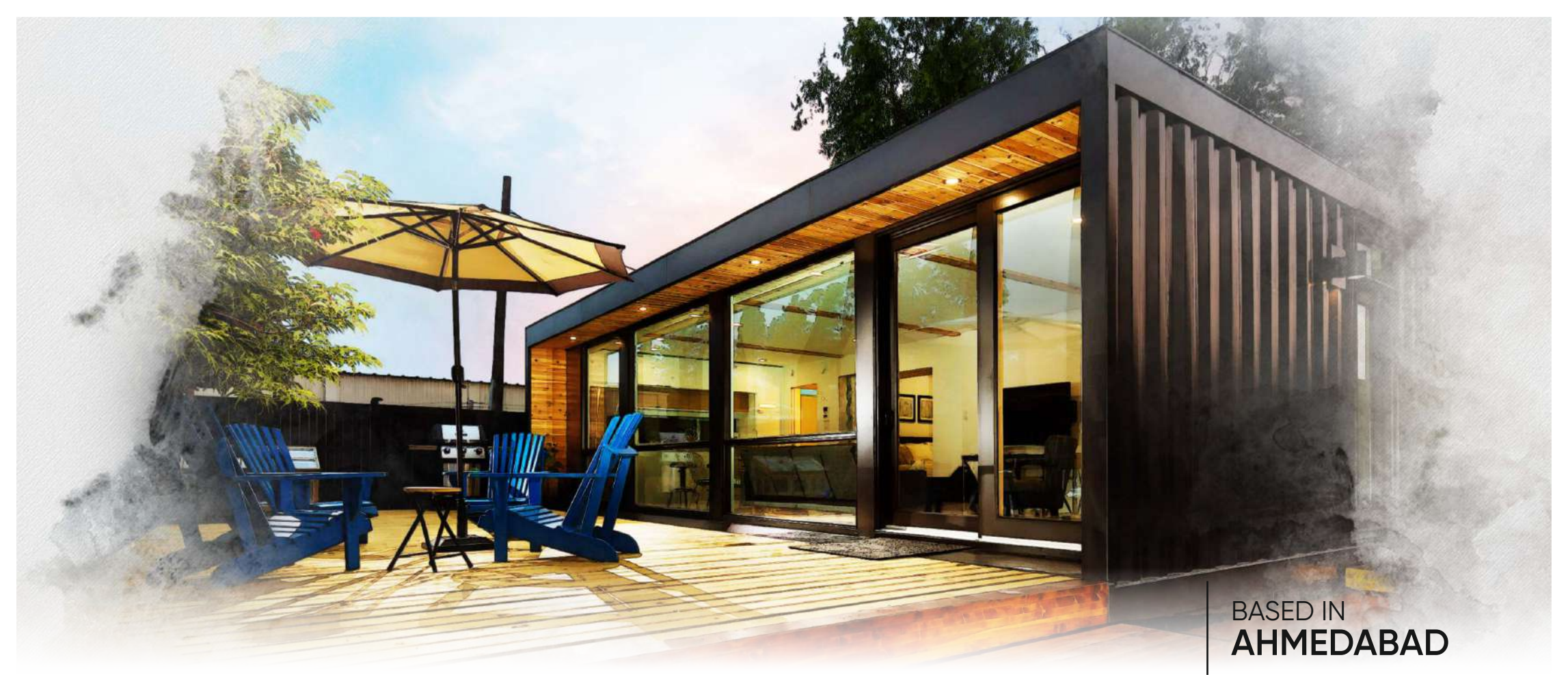


CMM[®]
P R E F A B
— Pvt Ltd —



Strength Speed

CUSTOMIZATION SUSTAINABILITY



BASED IN
AHMEDABAD

INTRODUCTION

At CMM Prefab Pvt Ltd, we are revolutionizing the future of construction with Portable, Durable, And Smart Prefab Infrastructure. Specializing in container-based and civil-look prefab structures, we deliver fast, functional, and fully customized spaces for industries across India – and beyond.

5+

YEARS OF EXP

75+

CLIENTS

98%

ONTIME DELIVERY

8+

WORKED
ACROSS STATES

PREFAB *Luxury*



OUR VALUES

QUALITY FIRST

We Never Compromise On
Material, Structure, Or Service.

TEAMWORK & GROWTH

Every Member Counts.
Together, We Rise.

INTEGRITY IN EXECUTION

Honest Pricing, Transparent
Communication, And Reliable
Delivery.



SUSTAINABILITY

From Eco-conscious
Materials To Waste-free
Sites.

CUSTOMER-CENTRICITY

Your Vision Is Our Blueprint.
Every Detail Counts.

INNOVATION & ADAPTABILITY

We Design Solutions That Evolve
With Industry Needs.

PROJECT TIMELINES

WE TAKE PRIDE IN DELIVERING ON TIME, EVERY TIME.



FARMHOUSE CABINS
15–20 DAYS



CONTAINER OFFICES
7–10 DAYS



G+1 STRUCTURES
30–45 DAYS

CUSTOM PROJECTS BASED ON SCOPE AND DESIGN

INDUSTRIES WE SERVE

Our Versatile Prefab Solutions Are Designed To Serve A Wide Range Of Industries With Speed, Safety, And Sustainability

HEALTHCARE



PORTABLE
HOSPITALS



CLINICS



TESTING
LABS

GOVERNMENT & CSR PROJECTS



SKILL
CENTER



COMMUNITY
HALLS



TOILETS

RETAIL & FOOD CHAINS



KIOSKS



FRANCHISE
OUTLETS



POP-UP
STORES

AGRICULTURE & FARMHOUSES



PREFAB
HOMES



SHEDS



STORAGE
CABINS

EVENTS & EXHIBITIONS



STALLS



TEMPORARY
BOOTHS



MEDIA
ROOMS

HOSPITALITY & RESORTS



PORTABLE
COTTAGES



RECEPTION
CABINS



DORMS

CONSTRUCTION & INFRASTRUCTURE



SITE
OFFICES



LABOUR
COLONIES



STORE
ROOMS

EDUCATION SECTOR



SCHOOLS
CLASSROOMS



TRAINING
CENTER

WHY TO CHOOSE CMM PREFAB



**SPEED &
TIMELINESS**



**COST
CONTROL**



**DURABILITY &
STRENGTH**



CUSTOMIZATION



**PORTABILITY &
FLEXIBILITY**



**PORTABILITY &
FLEXIBILITY**



CMM[®]
P R E F A B
Pvt Ltd



EXECUTION PROCESS

Our project delivery system is built on **precision, transparency, and reliability** — whether it's a single cabin or a multi-unit colony.



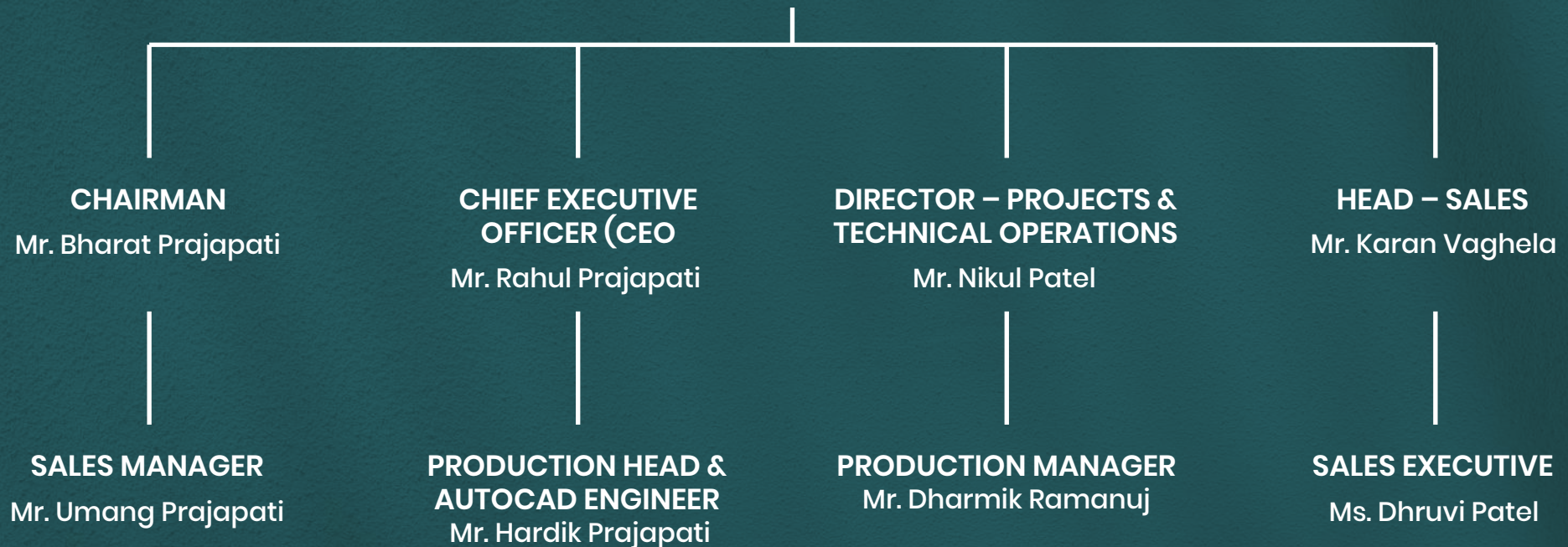
We Blend Factory Precision With On-ground Execution Mastery To Deliver Results — On Time, Every Time.

OUR TEAM —



FOUNDER & DIRECTOR

— Mr. Jashvant Prajapati —



SAFETY & EXECUTION

At CMM Prefab Pvt Ltd, safety is engineered into every phase of our process. Whether at the factory or the project site, we maintain world-class safety standards, ensuring the well-being of our team, our clients, and the environment.

OUR SAFETY FRAMEWORK INCLUDES



- **PPE & Worker Training:**

Mandatory protective gear and site-specific safety training for all team members.

- **Fire & Weather Resistance:**

Use of fire-rated panels, proper earthing, and weatherproofing to withstand diverse Indian conditions.

- **Structural Integrity Checks:**

Pre-installation and post-installation stress/load inspections to ensure long-term durability.

- **Electrical & Plumbing Safety Audits:**

Each unit is tested for circuit loads, grounding, leak prevention, and functional utility lines before dispatch.

- **Clean & Secure Sites:** We ensure debris-free, hazard-free sites throughout execution.

OUR PORTABLE INFRASTRUCTURE SOLUTIONS



PREFAB PROJECT OFFICE



PREFAB HOME



PREFAB CAFÉ



PREFAB TOILET



CONTAINER OFFICE



LABOUR COLONY

OUR PORTABLE INFRASTRUCTURE SOLUTIONS



PREFAB WAREHOUSE



SECURITY CABIN



PREFAB PREMIUM CONTAINER



PREFAB BUNK HOUSE



PREFAB INDUSTRIAL PARTITION



PREFAB SHIPPING CONTAINER



ABOUT US

PREFAB IS THE FUTURE — AND WE'RE BUILDING IT TODAY.



PORTABLE INFRASTRUCTURE SOLUTIONS



ENGINEERING PRECISION WITH CIVIL-STYLE AESTHETICS,



MODULAR AND MOBILE PREFAB STRUCTURES



QUALITY, SPEED, AND RELIABILITY

CLIENTELE

 <p>Reliance Industries Limited</p>	 <p>CIMS</p>	 <p>भारतीय रिज़र्व बैंक RESERVE BANK OF INDIA</p>	 <p>HOCCO ICE CREAM</p>	 <p>SOSYO</p>	 <p>THE BHAGYODAYA CO-OPERATIVE BANK LTD.</p>
 <p>TAKENAKA</p>	 <p>TRINE PROJECTS <i>Shaping tomorrow</i></p>	 <p>SANGATH® IPL group since 1981</p>	 <p>ग्वालिया GWALIA</p>	 <p>shareat eat • love • enjoy!</p>	 <p>SHIVALIK BUILDING LANDMARKS SINCE 1998</p>
 <p>THE HOUSE OF MAKEBA</p>	 <p>BRIMAX® AAC PRODUCTS</p>	 <p>pushpak</p>	 <p>FABTECH MANUFACTURING PVT. LTD.</p>	 <p>PALAK PRIME SIGNATURE COMMERCIAL HUB</p>	 <p>mood or wood</p>
 <p>D Y PATIL SPORTS ACADEMY MAYE MUMBAI</p>	 <p>JBS</p>	 <p>SHREEDHI INFRASTRUCTURE</p>	 <p>DEK & MAVERICKS INFRA TECH PVT. LTD.</p>	 <p>CONSTERA DURD PERSISTENCE & ENDURANCE</p>	 <p>Rigid</p>
 <p>HAMRAZ GROUP</p>	 <p>SHASHVAT® INFRAVENTURE PVT. LTD. "Build the Dreams"</p>	 <p>सुनिश्चित विज्ञानं पृथिव्यासोपसकम् ॥ GUJARAT BIOTECHNOLOGY UNIVERSITY</p>	 <p>RBZ® JEWELLERS LTD</p>	 <p>CONSTRUCTIONS INDIA PRIVATE LIMITED <i>Shaping the vision into reality.</i></p>	 <p>BA PRERNA RENEWABLES</p>



📞 +91-8460455568 ✉ sales@cmmprefab.com

📍 110, President House, C.G. Road, Ahmedabad, 380009

🌐 www.cmmprefab.com